

2/ram7

次の2次関数の最大値と最小値を調べなさい。ただし、()内は定義域とする

(1) $y = x^2 + 4x$ ($0 \leq x < 3$)

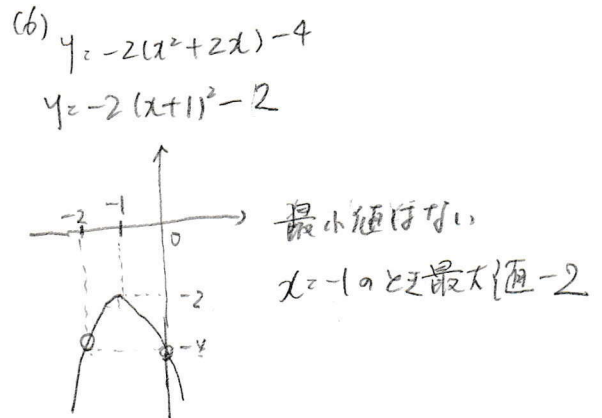
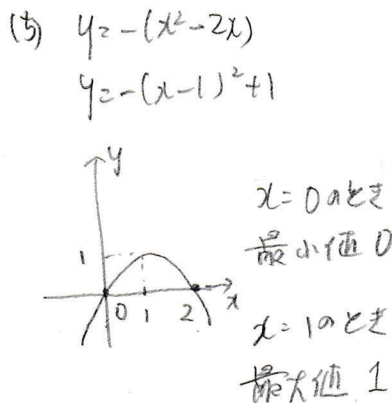
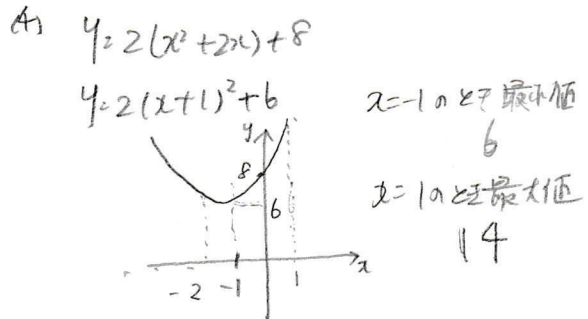
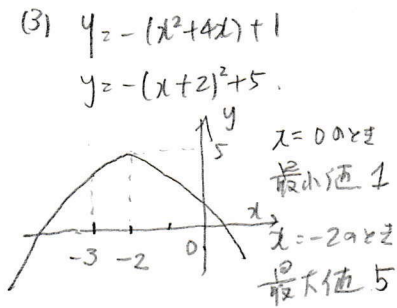
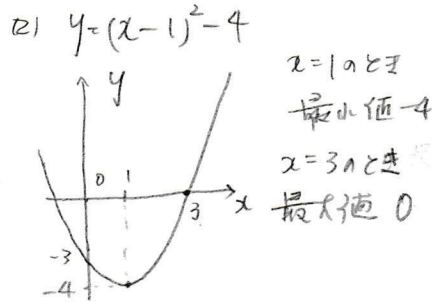
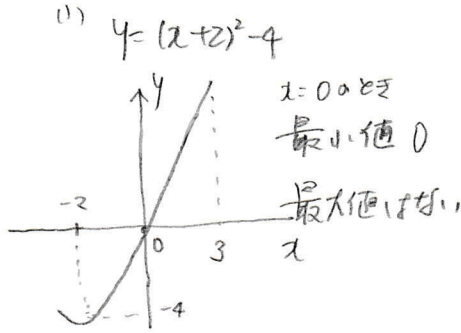
(2) $y = x^2 - 2x - 3$ ($0 \leq x \leq 3$)

(3) $y = -x^2 - 4x + 1$ ($-3 \leq x \leq 0$)

(4) $y = 2x^2 + 4x + 8$ ($-2 \leq x \leq 1$)

(5) $y = -x^2 + 2x$ ($0 \leq x < 2$)

(6) $y = -2x^2 - 4x - 4$ ($-2 < x < 0$)



- 8