

Sanbaku 9

✓

$0 \leq \theta < 2\pi$ のとき、次の方程式と不等式を解け。

(1) $\sin \theta = \frac{1}{\sqrt{2}}$

(2) $2 \cos \theta + 1 = 0$

(3) $\tan \theta = -\frac{1}{\sqrt{3}}$

(4) $\sin \theta < -\frac{1}{2}$

(5) $\cos \theta < -\frac{1}{2}$

(6) $\tan \theta < \sqrt{3}$

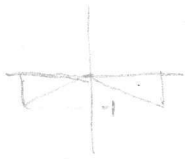
d) $\theta = \frac{\pi}{4}, \frac{3}{4}\pi$

⇒ $\cos \theta = -\frac{1}{2}$



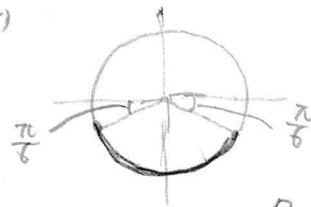
$\theta = \frac{2}{3}\pi, \frac{4}{3}\pi$

b)



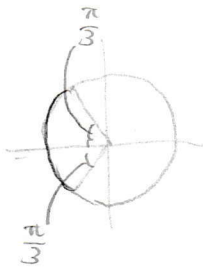
$\theta = \frac{5}{6}\pi, \frac{11}{6}\pi$

(4)



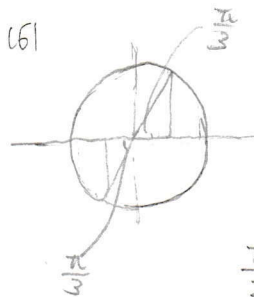
$\frac{7}{6}\pi < \theta < \frac{11}{6}\pi$

(5)



$\frac{2}{3}\pi < \theta < \frac{4}{3}\pi$

(6)



$0 \leq \theta < \frac{\pi}{3}$

$\frac{\pi}{2} < \theta < \frac{4}{3}\pi$

$\frac{3}{2}\pi < \theta < 2\pi$